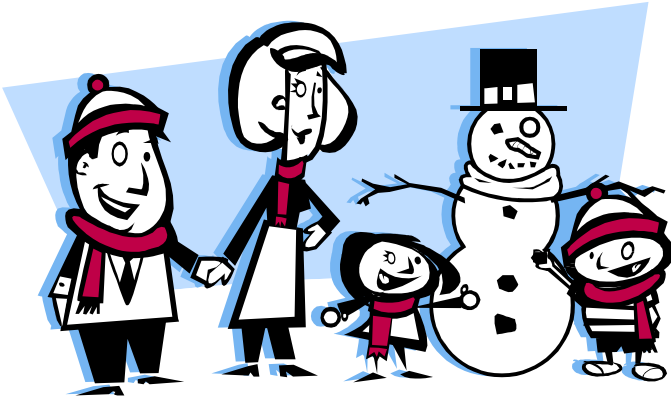


In a Nutshell

Newsletter # 366

November 30, 2011



Dates to Remember

Please mark your calendar

- | | |
|-----------------------------------|---|
| <i>December 16</i> | <i>Class Parties</i> |
| <i>December 19-
January 2</i> | <i>Winter Break
(SCHOOL CLOSED)</i> |
| <i>January 3</i> | <i>School Begins</i> |

Information Corner

- Please remember, as it gets cold, we will go outside every dry day. Please be sure to send your child with a coat & hat, labeled with their name.
- Please be sure to check your students file in the hall when you sign in or out. We do not want you to miss anything!
- Please take nap things home each Friday to be laundered and return on Monday.
- Children should never be left unattended in your car while it is in the school parking lot. A parent or other adult must come inside to pick up our students. Older siblings must be at least 16 years old and on the pick up list for us to release a student to them.
- Please notify the office of all address and phone number changes. It is important that we have current information when trying to reach parents.

Parent Association meeting

Class Parties

*Class Christmas parties will be **Friday, December 16th**. Students will need to bring their own lunch as. The Christmas Party chairman will be calling parents who volunteered to help. Parents may be asked to help provide a special snack, drinks, and paper goods for the party. Students who do not normally attend on Friday may come for the party. Check with your child's teacher to find out the party time.*

Scholastic book orders are due **Monday Dec. 5th**. This will allow enough time to receive books before we close for the holidays.

School Closed

December 10 January 2